

# DEVINE GRAPPLE

## Parts Manual



## HEAVY DUTY DG25T

Phone: 07 3785540

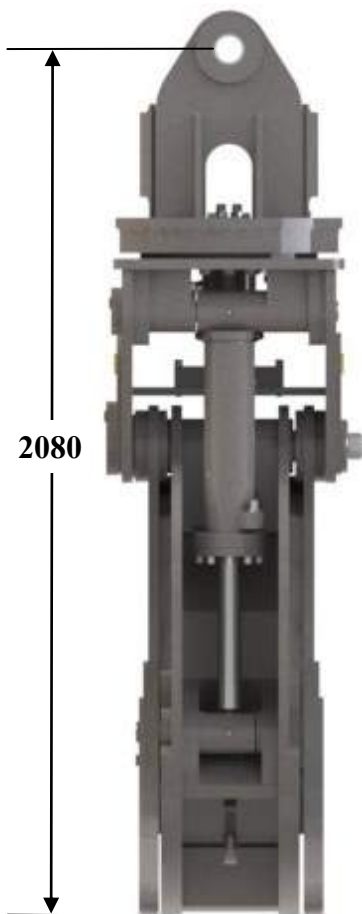
Email: [info@devine2006.co.nz](mailto:info@devine2006.co.nz)

Mobile: 027 4800866

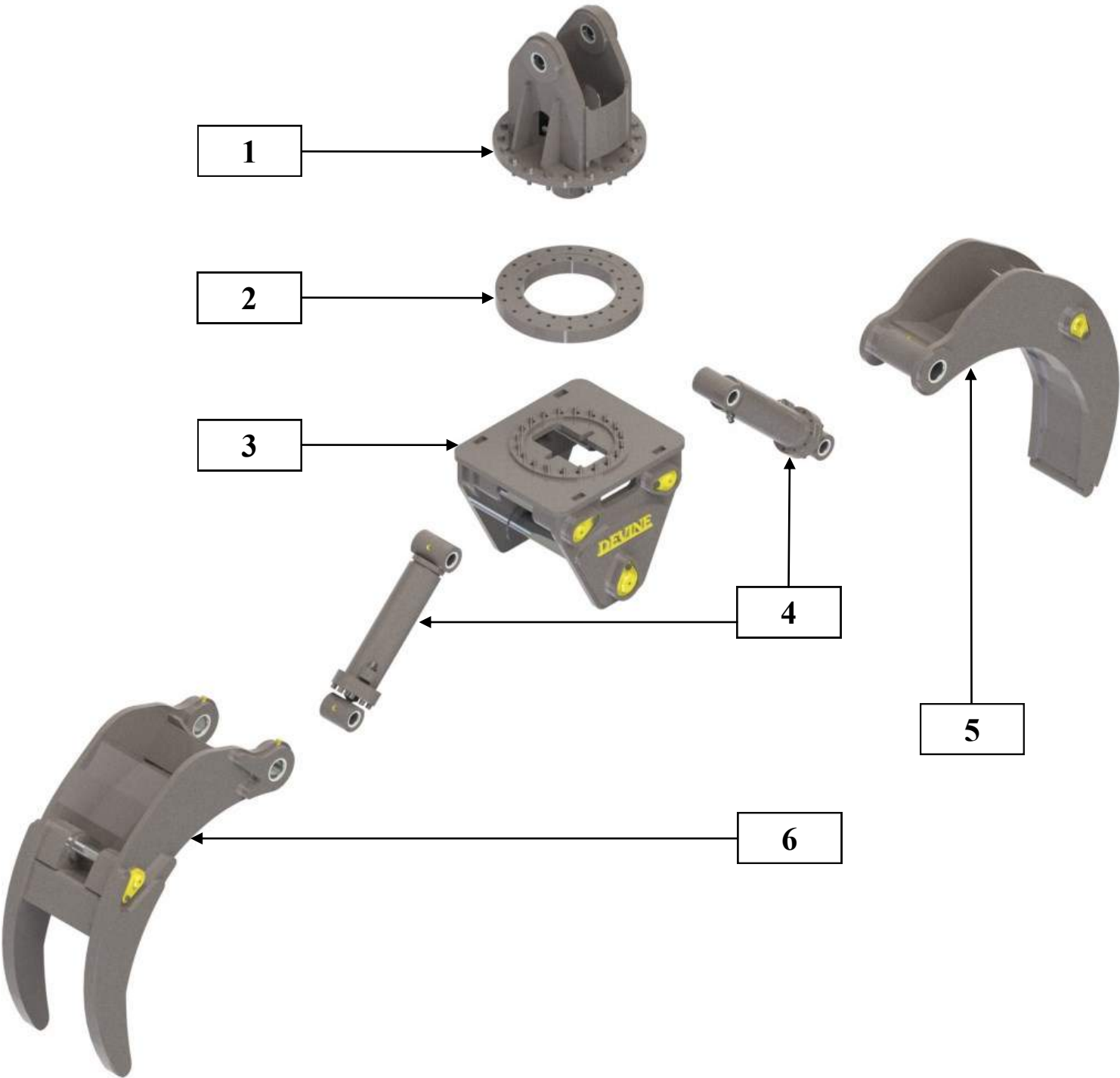
Web site: [www.Devine2006.co.nz](http://www.Devine2006.co.nz)

**DEVINE ENGINEERING**  
—  (2006) LIMITED

# DEVINE 25T

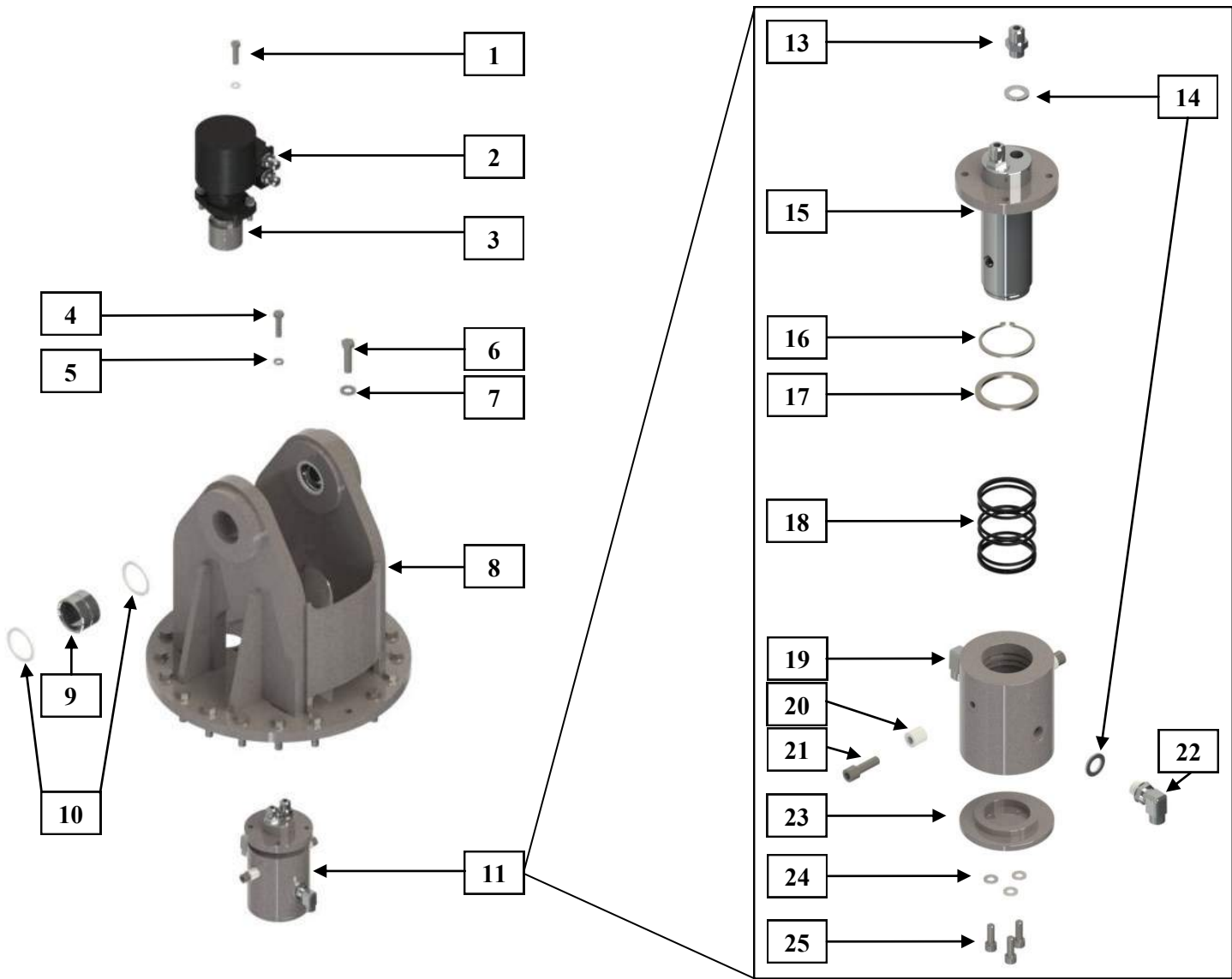


# DG1000 Series



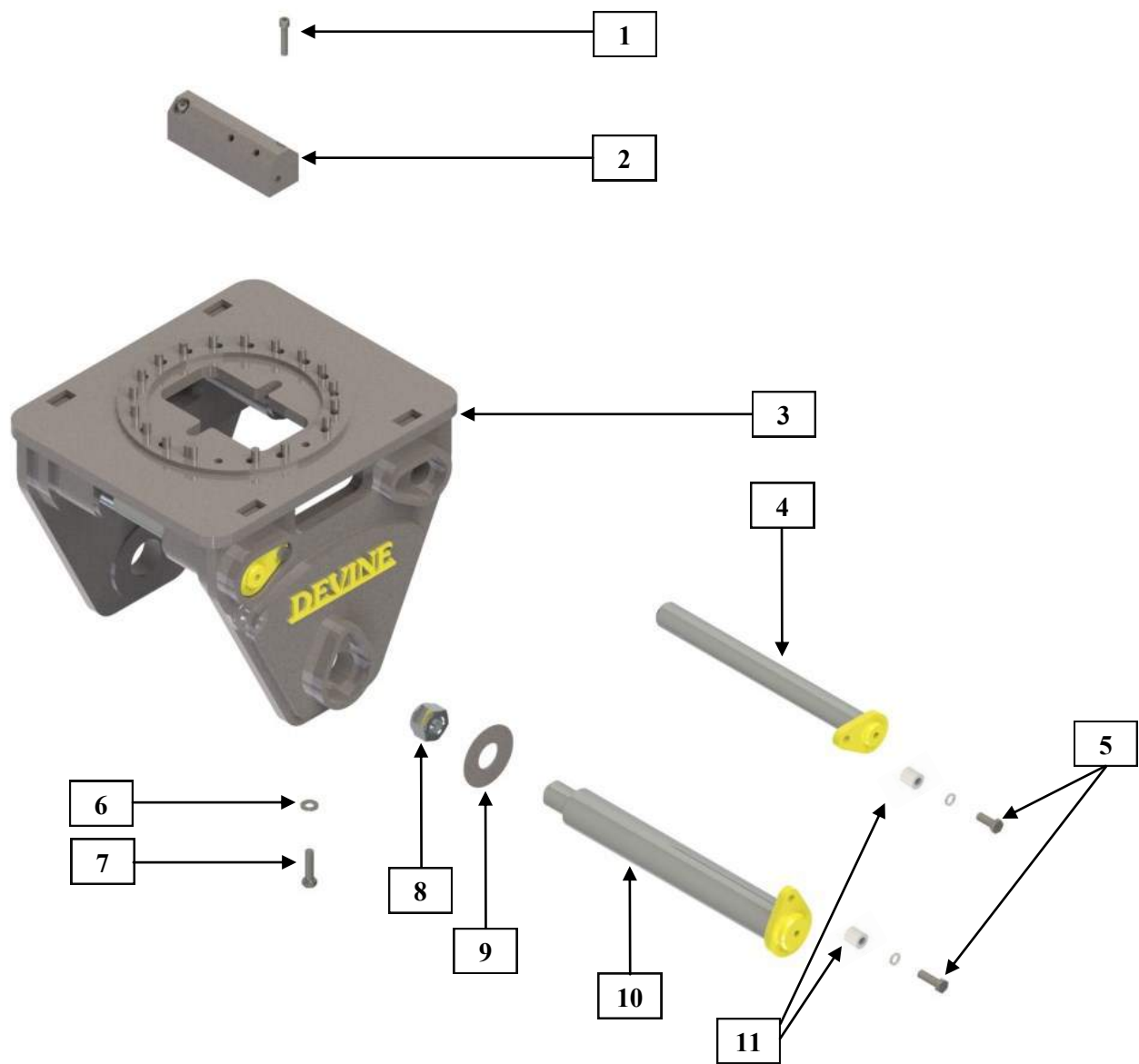
CONTENTS			
Item #	Item Code	Description	Page #
1	DRB01	Rotator Body	4
2	DSB01	Slew Bearing	4
3	DGB01	Grapple Body	5
4	DCA01	Cylinder Assembly	6
5	DSJ01	Spade Jaw	7
6	DTJ01	Tine Jaw	7

# DEVINE 25T



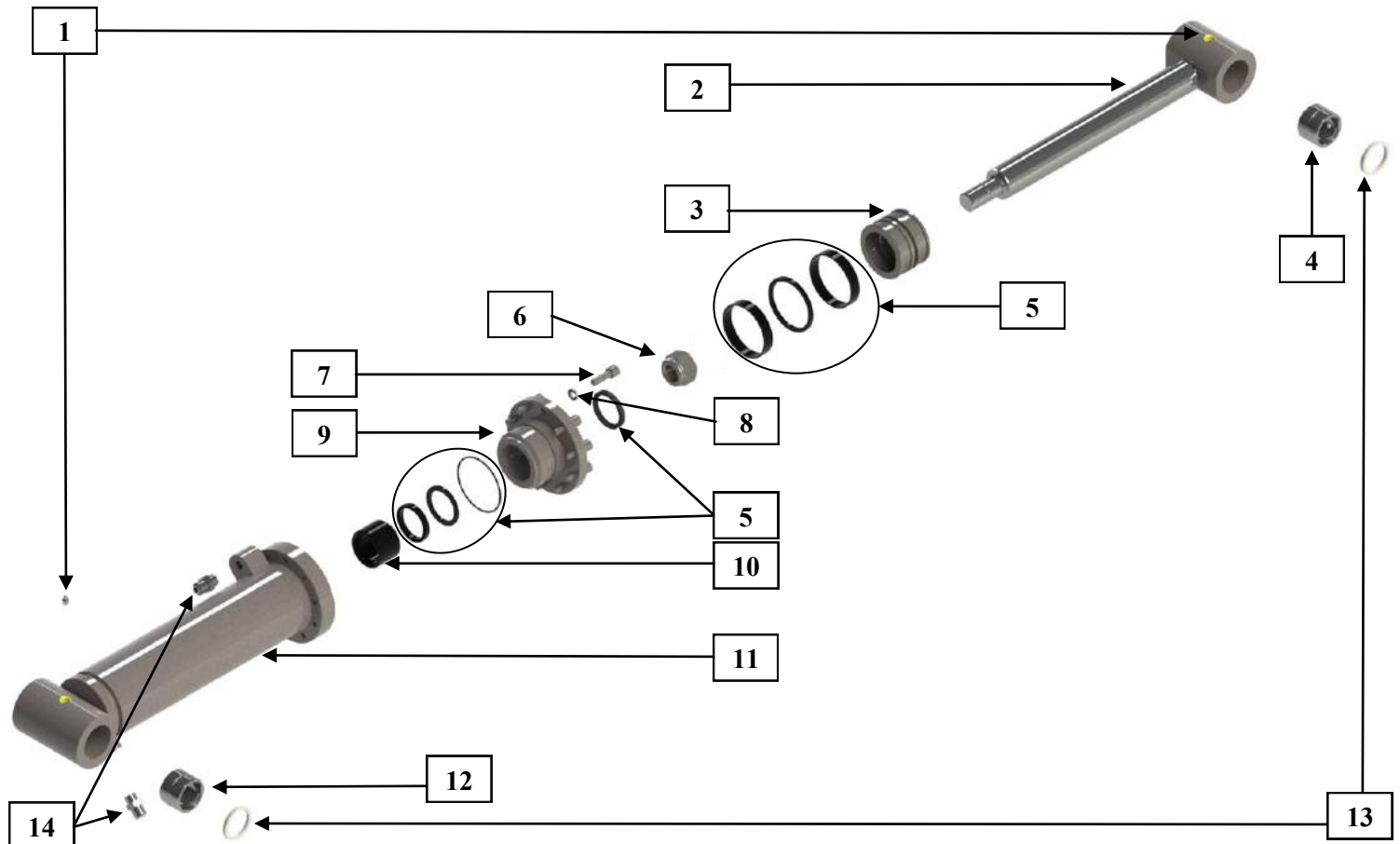
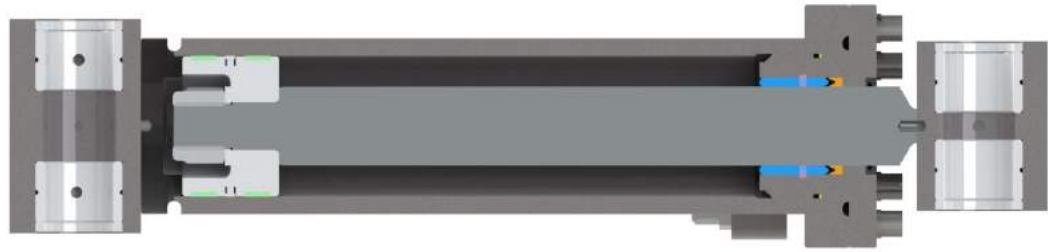
Item #	Quantity	Item Code	Description
1	4	B10-UNC1211212P	1/2" UNC 12 Pointer Bolt 1 1/2" Long
2	1	DSM01	Slew Motor
3	1	DSP01	Slew Pinion
4	4	B10-UNC12134	1/2" UNC Bolt 1 3/4 Long
5	4	0W12H	1/2" Hardened Washer
6	20	B10-UNC582	5/8" UNC Bolt 2" Long
7	20	0W16H	5/8" Hardened Washer
8	1	DRB01	Rotator Body
9	2	BD253020	Bush D-Glide FC
10	4	SW253008	Wiper Seal
11	1	DSA01	Swivel Assembly
12	1	DSB01	Slew Bearing
13	2	B-G-0814	Hose Fittings
14	4	D-08	Dowty Seal
15	1	DSS01	Swivel Shaft
16	1	CCE70	Swivel Circlip
17	1	DSR02	Swivel Retainer Top
18	1	SKCS01	Swivel Seal Kit
19	1	DSH01	Swivel Housing
20	2	DSL01	Swivel Locating Sleeve
21	2	CSUNC12112	1/2" UNC Cap Screw 1 1/2" Long
22	2	G-BP-90-1408	Hose Fittings
23	1	DSR01	Swivel Retainer Bottom
24	3	OW10H	3/8" Hardened Washer
25	3	CSUNC381	3/8" UNC Cap Screw 1" Long

# DG1000 Series



Item #	Quantity	Item Code	Description
1	2	CSUNC123	1/2" UNC Cap Screw 3" Long
2	1	DHM01	Hydraulic Manifold
3	1	DGB01	Grapple Body
4	2	DPB01	Pin Body
5	3	B10-UNC58134	5/8" UNC Bolt 1 3/4 Long
6	25	0W16H	5/8" Hardened Washer
7	20	B10-UNC58214	5/8" UNC Bolt 2 1/4" Long
8	1	NNF2	3" Pin Nut
9	1	DPW01	3" Pin Washer
10	1	DPM01	Pin Main
11	3	DPL01	Pin Locating Sleeve

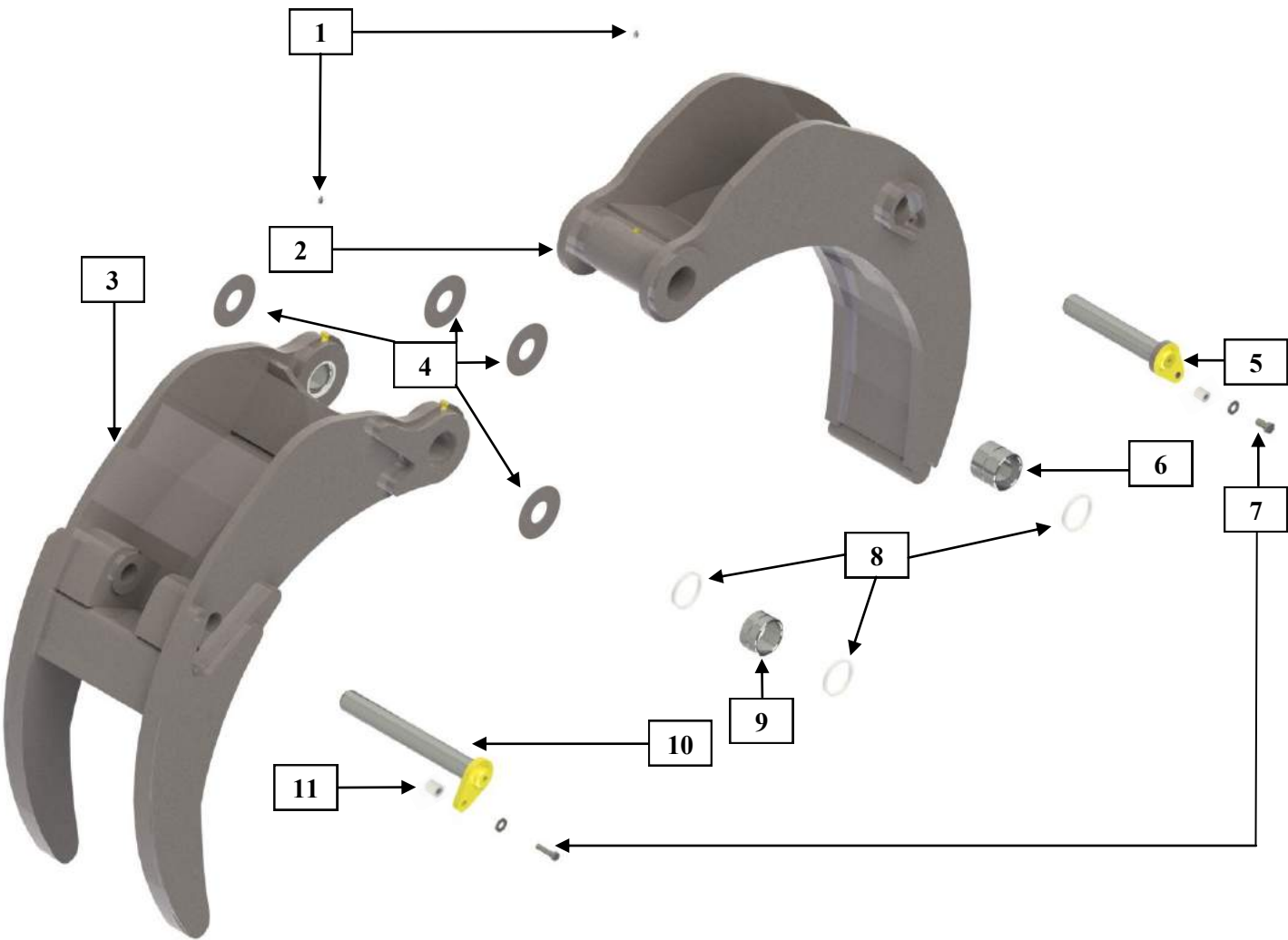
# DEVINE 25T



Item #	Quantity	Item Code	Description
1	2	GN1001	1/8" BSPP Grease Nipple
2	1	DCS01	Cylinder Spear
3	1	DCP01	Cylinder Piston
4	1	BD2025414	Bush D-Glide FC
5	1	DSK01	Seal Kit
6	1	NNF138	1 3/8" UNF Nylock Nut
7	10	CSUNC122	1/2" UNC Cap Screw 2" Long Znk
8	10	OWI12	1/2" Washer
9	1	DCG01	Cylinder Gland
10	1	DCGB01	Gland Bush
11	1	DCB01	Cylinder Barrel
12	1	BD2025512	Bush D-Glide FC
13	4	SW200	Wiper Seal M/C
14	2	B-B-1408	Hose Connections



# DG1000 Series



Item #	Quantity	Item Code	Description
1	3	GN1001	1/8" BSPP Grease Nipple
2	1	DSJ01	Spade Jaw
3	1	DTJ01	Tine Jaw
4	4	GW3001	Spacer Washer 3"
5	1	DPS01	Pin Spade
6	2	BD303530	Bush D-Glide FC
7	2	B10-UNC58134	5/8" UNC Bolt 1 3/4" Long & Washer
8	4	SW303508	Wiper Seal M/C
9	2	BD303520	Bush D-Glide FC
10	1	DPT01	Pin Tine
11	2	DPL01	Pin Locating Sleeve



### Warranty Policy

Customer satisfaction is of the utmost importance to Devine Engineering.

Devine Engineering (2006) Limited warrants to the original purchaser that the equipment sold under this warranty will be free from defects of materials & workmanship for a period of 12 months from the date of purchase.

Devine Engineering will undertake to repair or at its option, replace any defective part within this period. This warranty does not cover maintenance items such as pins & bushes, or damaged caused by, misuse, neglect, abuse, improper operation, modifications or lack of maintenance. Return to base, for repairs under warranty maybe required.

In addition, this warranty in its entirety does not cover minor service items including leaking hoses or fittings, tightening nuts and bolts, blocked or broken grease nipples or any items therein determined to be of a minor service nature in the opinion of Devine Engineering.

**Phone: 07 3785540**

**Email: [info@devine2006.co.nz](mailto:info@devine2006.co.nz)**

**Mobile: 027 4800866**

**Web site: [www.Devine2006.co.nz](http://www.Devine2006.co.nz)**

**DEVINE ENGINEERING**  
 **(2006) LIMITED**